



# **Annual Report**

**for the Year ending**

**31 March 2015**

## Chair's Report

The past year has revealed new tragedies in human migration that demonstrate how much the work of organisations like RRSB is needed.

Our two core paid staff, Nick Harborne (Director) and Flora Roshi (Administration and Volunteer coordinator) have taken the organisation forward and proved to be outstanding in terms of commitment to our aims and values. We have also had new expertise join our Board of Trustees – Mike Martin, Andi Nygaard and Nora Honkala all providing unique skills and making the guidance of RRSB a more manageable job.

My sincere thanks go to Paul Harper and Rachel Spencer – both of whom resigned from the Board of Trustees and both of whom were integral to helping RRSB reshape its structure, aims and grow over the past year.

Alice Driver has worked tirelessly on the new website and has pulled RRSB into the 21<sup>st</sup> century with a strong social media profile through Facebook and Twitter. It is important to state how incredibly valuable all of our volunteers are in providing this vital service to Reading. We thank each and every one of you for the generous time you devote to working with us as administrators, publicists, fund raisers, on stalls, in the office, advising clients and offering a warm welcome to RRSB.

We continue to work with other organisations and successfully developed a new Homework Club at Queen Anne School through the kind support of BG Group Community Fund – we thank them for their commitment to education for our clients' children and look forward to working with them in the future. Our plans for developing Reading as a City of Sanctuary are slowly taking shape and we hope to have more news on this in the coming year.

The main focus of much of our work over the past year was a full review of our services conducted by RBC. Whilst the process was useful in some ways, it was incredibly time consuming and we did not feel that their final report adequately represented the work that we do. We have presented our own report which provides clearer and more robust statistical evidence on migration, dispersal and financial implications and, whilst we are grateful to RBC for their continued support we expect, like most voluntary groups in Reading, to see a significant reduction in core funding in the future.

The financial year 2014/2015 saw our income rise from £55,933 to £ 70,637 and our expenditure fall from £60,190 to £ 57,442. We have been successful in accruing funding from the Earley Charity, Hilden Trust and BG Group. Online fundraising through Local Giving, Virgin Giving and donations via our website have resulted in generous contributions from our supporters. Myself, Nick and Ben (a former volunteer) all ran the Reading Half Marathon and were grateful for your support around the course. We were also selected as one of The Mayor of Reading's Charities this year that further raised our profile and meant we achieved an impressive £10,902 in general donations.

We now have a full Business Plan in place, we are building partnerships with other organisations in Reading and our priority is Fund Raising so that we can make ourselves

financially secure. We are positive that we can create a sustainable future, indeed we have to as there are more people who require our help than ever before and we are all committed to offering them the help that should be expected in Reading.

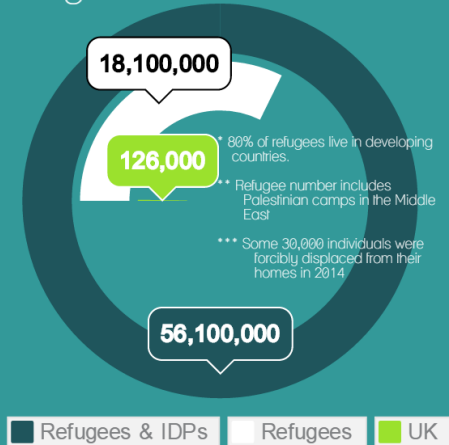
Finally, I would like to extend my thanks to the Board of Trustees who also give their time so generously to support RRSB and wish you all a very successful year ahead.

A handwritten signature in blue ink that reads "M. Richardson". The signature is written in a cursive style with a large initial "M" and a dot over the "i".

**Mary Richardson, Chair of Trustees**

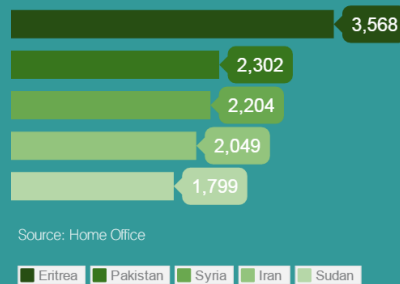
# Refugees in numbers

## Refugees world wide & UK

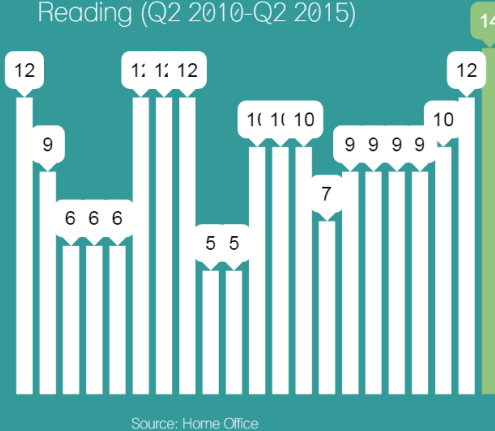


## Top 5 nationalities applying for asylum in the UK 2014-2015

50 % of refugees live in Asia  
28% of refugees live in Africa  
Less than 1% of refugees live in the UK



## Quarterly Section 95 recipients in Reading (Q2 2010-Q2 2015)



## Section 95 Asylum applicants in Reading

There were 25,771 asylum applications made to the UK in the period June 2014-June 2015.

In 2014 only some 39% of these are accepted.

Whilst awaiting decision asylum applicants are entitled to Section 95 support if they do not have adequate accommodation or enough money to meet living expenses for themselves and any dependents now or within the next 14 days.

Financial support is currently £36.95 per week.

Only some 0.05% of Section 95 applicants live in Reading - though the number has been increasing modestly since 2012.

Produced by RRSRG using Piktochart

Thanks to Alice Driver, Marian McNichol and Andi Nygaard for creating this summary – to remind us why RRSRG matters.

## Financial Report

RRSG has once again had a year of significant financial challenge, however the measures taken last year to contain spending and generate fresh streams of income have continued to develop and saw RRSB end the year with a small excess of income, a real achievement given the position at the start of this financial year. This excess is in large part due to the considerable efforts expended to raise our public profile and encourage online donations, whilst continuing to monitor our expenditure and renegotiate contracts as and when possible.

Reading Borough Council has again been our main funder, providing £46,890 income to fund our core advice and support services to Asylum Seekers. However it should be noted that both our funding and core service provision are being challenged by RBC and are under review and the core funding will be reduced from next year and further in subsequent years.

Online fundraising through Local Giving, Virgin Giving and donations via our website have made excellent progress this year; we are seeing regular monthly giving as well as donations for specific events such as the Reading Half Marathon, where staff and volunteers ran to raise funds for RRSB. We were also selected as one of The Mayor of Reading's Charities this year that further raised our profile and meant we achieved an impressive £10,902 in general donations.

A grant for £4,077 from the BG Group was secured to develop another homework club, when added to grants carried forward from last year from the Earley Charity (£2,326) to support recruitment and training of volunteer caseworkers, and Hilden Trust (£5,800) to support our core advice service, we were able to operate with a small surplus. We are still actively exploring other sources of income including alternative core funding grants.

### Income and Expenditure

For the reasons set out above, I'm pleased to report income rose from £55,933 to £ 70,637 and expenditure fell from £60,190 to £ 57,442 with staff costs remaining the most significant at £41,420. All other costs were broadly in line with the budget, apart from professional fees that were higher than anticipated due to additional consultancy requirements. All significant client costs were funded via the Red Cross destitution fund.

Despite our best efforts the group's future still remains uncertain, especially with regard to our core funding from RBC. Nevertheless trustees and staff remain committed to continue making our vital services available to the refugee community in the Reading area, and we are positively planning to meet their needs.

Thanks as always are given to the staff and volunteers both in the office and those who work to support us in other ways, for their boundless time and energy without which we would be unable to provide the support we do.

**Sharon Cole: RRSB Book keeper**

## Director's Report

If the 2013/4 Annual Report was dominated by the threat of funding cuts and the impact on the future of RRSB, this year's report 2014-15 is all about what a small charity can achieve as it fights for survival to protect its responsibilities as the only holistic provider of advice and support for asylum seekers and refugees in Reading.

- With support from the Trustees, the new RRSB Business Plan was written over the first few months of this year which quickly informed and directed other areas of the organisation: A comprehensive organisational risk assessment was completed, and an internal policy review was started.
- A fundraising sub group was formed charged with formulating our fundraising strategy and yielded quick results with funding from BG group to start a new homework club at St Anne's school and core funding from the Legal Support Trust. Work began on major grant applications and we started our Local Giving and online giving campaigns on our new website.
- Networking and profile rising across Reading has been vital as RRSB seeks to combat the continuing public confusion about over economic migrants and immigration, and refugees and asylum seekers. We have been active in the media with several articles, letters and interviews reaching out across Berkshire and we have attended regional and national training conferences, and have held our own training promoting Awareness of Trafficking and Slavery Victims which we opened up to colleagues across Reading.
- At our last AGM we launched the City of Sanctuary steering group together with RSIC, RVA, The Mustard Tree, British Red Cross and ACRE. We have met four times over this year and attended 2 national conferences and gained the support of our local MP Rob Wilson.

Huge amounts have been achieved at RRSB supported by an ever-increasing number of dedicated partners, supporters, volunteers and trustees:

- We have a new website (thank you Brand 786), and set up Twitter and Facebook accounts (thank you Alice).
- We ran a very successful photography project with Alicia Field Photography and the London Camera Exchange (LCE) over Refugee Week culminating in a 3 month exhibition at RSIC
- We enjoyed working with the Mayor of Reading Cllr Tony Jones as one of his chosen charities and supported many of his events and fundraising activities.
- The Shed Café supported us by making a donation from every cheeseboard sold. RRSB nominated The Shed for a Pride of Britain Award for their support and were delighted when they won Small Business of the Year.
- The Shed, LCE and the Grumpy Goat Café kindly sold our calendars before Christmas.

- Connect Reading provided contacts resulting in the donation of a projector to support the project of one of our clients.
- The Bishop of Reading Rev Andrew Proud kindly agreed to be our Patron
- We held a fundraising Barn Dance (thank you Liz Bailey) which was great fun.
- Thank you to Mary, Rob and Ben who ran the Reading Half Marathon on our behalf.
- Welcome to Mike, Andi and Nora who joined the Board of Trustees.

As RRSB works towards securing a stable future, we must be mindful of the day-to-day survival faced by asylum seekers and refugees who flee for their lives. RRSB feels it is essential that Reading is able to support those that make it to the UK and to Reading. When Mary (RRSB Chair) was asked why she was taking part in the Reading Half Marathon she said, "I am running so others don't have to".

**Nick Harborne - Director**

## Our Advice Service

Refugees and asylum seekers endure terrifying and unimaginable experiences arriving in this country having fled persecution, torture, war, sexual abuse and famine. RRSG's mission is simple: to improve the lives of those that end up in the Reading area by providing support and advice and helping them to navigate through layers of bureaucracy which may be alien to them.

Leading our work are our volunteer caseworkers.

We said a sad farewell to three of our Office of the Immigration Service Commissioner (OISC) caseworkers George, Tenisha and Mobina this year. George had been a volunteer for over 5 years at RRSG and has supported many clients. We all owe him a debt of gratitude for such an outstanding contribution. Tenisha and Mobina, both law graduates, succeeded in gaining jobs and also helped many of our clients with tact and determination. We wish them well in their careers. Our sincere thanks go to all of you.

We welcomed Ildephonse as a very experienced OISC caseworker who joined Behnam who has been with us for several years. Together they maintained our service directly to our client and found time to start training our new volunteer caseworkers, Marfaz, Rosie and Teona.

Our advice service continues as previous years: drop in service (10am -12.30pm) each Monday with appointments Tuesday to Thursday 10am – 1pm.

During this year we assisted a total of 98 clients (102 in 2013-14). Of this total 44 clients were new clients this year (43 in 2013-14) indicating numbers of client remain steady and have not declined.

Again the in majority of cases people are formally seeking asylum.

Table 1 New clients 2014 – 2015

New Clients 2014 - 2015 by immigration status	
Latest Immigration Status	No of Clients
Asylum Seeker	25
British Citizen	0
Discretionary Leave to Remain	1
Humanitarian Protection	2
Indefinite Leave to Remain	0
Mixed Status	0
other	7
refugee -five years	8
Refugee indefinite	1
<b>Total</b>	<b>44</b>



Table 2 All clients 2014 - 2015

<b>Clients 2014 - 2015 by immigration status</b>	
<b>Latest Immigration Status</b>	<b>No of Clients</b>
Asylum Seeker	58
British Citizen	1
Discretionary Leave to Remain	4
Humanitarian Protection	1
Indefinite Leave to Remain	3
Mixed Status	1
other	8
refugee -five years	18
Refugee indefinite	4
<b>Total</b>	<b>98</b>

Table 3 All clients by Country 2014 - 2015

<b>No of active Clients dates by country 2014-15</b>	
<b>Country</b>	<b>No</b>
Pakistan	13
Afghanistan	11
Zimbabwe	11
Sri Lanka	7
Sudan	7
Iran	6
Gambia	5
Kenya	4
Somalia	4
Syria	4
Tanzania	3
Uganda	3
Algeria	2
Congo	2
Mauritius	2
Palestinian Authority	2
Turkey	2
Undefined	2
Bhutan	1
Burundi	1
Guinea	1
Iraq	1
Malawi	1
Morocco	1
Tibet	1
Uzbekistan	1
<b>Total</b>	<b>98</b>

## Case Studies

MS and her daughter entered the U.K. in 1999 from war-torn Somalia. The reasons for her asylum claim are not known to RRSB but she and her daughter were granted Indefinite Leave to Remain in early 2000. She had had to leave behind two elder children whose whereabouts she did not know. Happily – with the intervention of the Red Cross Tracing Service – she was to find these two children who had fled with relatives to shelter in a refugee camp in Nairobi. At the end of 2012 the family was eventually reunited: RRSB had helped MS apply for a family reunion visa which along with much form filling had involved DNA tests and other biometric information. She has made 148 visits to RRSB over 14 years but this in no way represents the contact during that period. This has been on a more informal basis through MS & family's engagement with RRSB outreach and integration activities e.g. the Women's Group, the Youth Project, the Homework Club, as well as telephone advocacy on her behalf and home-visits. MS now has 5 children and the most recent was born with health problems. Because of the trust and long-term relationship RRSB staff have built up with MS, they were able to persuade her to engage with other agencies e.g. Home Start. Her visits to RRSB now are immigration queries and integration activities. As a British Citizen she goes to CAB, N:quire & Welfare Rights for welfare queries but without the confidence and knowledge of English & Life Skills in this country that has built up over the years and been facilitated by RRSB, this would not be possible. RRSB will continue to support MS whenever she needs us.

HS is a refused asylum seeker from Pakistan. He first entered the U.K. in January 1998 when he was 22 and put a claim in for asylum on entry. This claim was rejected in February 2000 and by February 2004 all his rights of appeal were exhausted. He had family here who initially provided support but, as is very common with asylum-seekers, he started to exhibit significant mental health problems including psychotic episodes. In the years between 2004 and 2013 he spent some time under psychiatric care and his family withdrew their support. In November 2013 he came to RRSB – homeless and destitute. HS was given a sleeping bag and food and he was brought to the attention of St Mungo's Street Team as he was street-homeless. An RRSB caseworker accompanied him to the mosque, who were willing to provide temporary support, to reassure him that members of the mosque were not "dangerous" and would not hand him over to the police. Meanwhile an application for NASS 4 had been submitted and was granted. HS was not able to take up the NASS accommodation as he was sectioned under section 3 of the Mental Health Act and admitted to Prospect Park Psychiatric Hospital. The Immigration Tribunal judge opined that NASS accommodation would not be suitable for him once he is discharged from the hospital. The client's lawyer contests the Home Office view that HS would be able to return overland to Pakistan: his medication needs to be monitored weekly. The Tribunal judge has requested more information. This case – which is ongoing – is complex involving both asylum and welfare issues. RRSB has logged 33 visits with numerous follow-up telephone calls and faxes. The main roles of RRSB have been crisis management, liaison between the various bodies involved and advocacy. Again the trust between the client and RRSB staff has been paramount as has been the awareness of the legal path that can be followed.

## Our volunteers and projects: 2014-2015

This year once again the support of our volunteers has been immeasurable; their skills, knowledge and their spirit have helped RRSB to continue to meet the client need despite the shortage of staff that has been going for the past years. Throughout the year all our volunteers have been committed and determined in their work to support refugees and asylum seekers, and to help them in their long journey of survival and sanctuary. Volunteers are the heart of RRSB and their outstanding work has made RRSB a strong organisation that continues to help our clients to integrate in the community.

### **Volunteers: April 2014-March 2015**

Quarter	New Volunteers	Total Number of volunteers	Number of volunteers hours per week
Q1	6	20	60
Q2	1	19	47.50
Q3	1	19	49.50
Q4	2	17	56

Their support has been in the following areas:

- Casework advice
- Reception
- Administration
- One to one English classes (ESOL)
- Homework Club
- Organising and assisting events
- IT, design and fundraising support

One of our volunteers says:

*After moving back to Reading last autumn after a few years away, I jumped at the chance to get involved in a local organisation committed to helping those who ask for a little help to get their lives on track. It has been a great opportunity to learn more about my hometown and the people who reside within it.*

*It's fantastic that RRSB is able to assist people from such a large range of nations and cultures, and as a volunteer I'm proud to play my own part in creating an environment where people are proud to call Reading their new home. I have got involved in new activities for the first time, while also giving me the chance to meet and work with a variety of interesting and engaging people.*

**Dan Bates**

## **Activities**

During the year Reading Refugee Support Group, with the help of all volunteers, has been able to organise and run different events. RRSB contributed to a wider programme of community cohesion in Reading, participating in some of the events taking place in the town, in order to get our clients involved in the community as well as raising the awareness of the work that RRSB does.

On 24<sup>th</sup> of April RRSB took part at the Penetrative service organised by Reading Borough Council (RBC). The event offered the opportunity to meet with other organisations around Reading and share between us very useful information about the services that we offer. In addition, staff from RBC came along and we saw that as a very good opportunity to talk about our work and the role that we play in helping the lives of asylum seekers and refugees in the Reading area.

- Reading Children's Festival on 10<sup>th</sup> May - despite the rainy and windy weather this event went very well, with parents and children of various ages enjoying the drumming workshops.
- The East Reading Festival on 8<sup>th</sup> June - *Kick the Ball* was very much enjoyed young and old alike.
- For Refugee Week a photo exhibition from our client families was displayed at RISC, with special guest the Reading Mayor attending.
- Caversham Festival 12<sup>th</sup> July. At this event RRSB had a drumming workshop organised by our Art volunteer Tomson and RRSB manager Nick.
- 21<sup>st</sup> and 25<sup>th</sup> July - two staff from RBC interviewed a group of our clients to find out how the services at RRSB helped them to integrate and how useful these services have been over the years.
- Reading Family Aid Group once more provided 18 seats for RRSB (clients and volunteers) for a summer outing to Paultons Park.
- On 17<sup>th</sup> October we had our AGM. This was a successful event, well-attended by our client group and other organisations in Reading with a special guest, the Mayor of Reading, followed by a lovely dinner cooked by Zakia, one of our clients.
- On 13<sup>th</sup> December we organised a Christmas party with lot of activities and light refreshments for the children who attend the Homework Club. This party was much enjoyed by both children and parents and at the end, the children received lovely presents that Reading Family Aid kindly offered to our client group.
- Staff and volunteers got together on 18<sup>th</sup> December for a lovely evening to celebrate Christmas and to thank everyone for their support.
- On 22<sup>nd</sup> January RRSB organised a live music Barn Dance fundraising event. This event was initiated by one of our longest serving volunteers, Liz, who came up with the idea of this fun and entertaining evening. It also provided a chance for our clients to find out about English dance, meet people and have fun. With the help of the

volunteers we had a very entertaining and fun night, with around 90 people attending. This included staff, volunteers, clients and members of the public, and we raised £450.

On 19<sup>th</sup> March RRSB joined other organisation at the RVA Volunteer Fair in Reading Town Hall. We had a lot of interest from the public wanting to find out what RRSB does, as well as enquiring about volunteer opportunities that we have available at our organisation.

Reading Half Marathon on 22<sup>nd</sup> March. We are very proud that this year we had a team of four people - Mary, Nick, Ben and Rob - running to raise money for our organisation at Reading Half Marathon. On the day we laid a table just outside of our office on London Street and got out our drums to cheer our team and all the other runners. It was a lovely community day.

## ***Homework Club***

This year is the fourth year that we have run the project. After the interest that we received and the benefits to our clients last year, our team of volunteers worked during the summer to expand the homework club to other schools in Reading. We contacted different schools and we received interest in starting the project at Queen Anne`s school in Caversham.

After the summer break the Homework Club started on the 15<sup>th</sup> September 2014 at Queens Anne`s and 7<sup>th</sup> October 2014 at Abbey School and it finished on the 31<sup>st</sup> March 2015 for both schools. For the 2014 - 2015 academic year the project ran at Abbey school twice a week and at Queen Anne`s once a week.

Working with the Abbey School is always easy, now that we know each other and we have a common objective to improve the knowledge and skill of the children and to give them more confidence at school.

With Queen Anne`s the relationship has been a little different due to it being the first year working with them, but it has been a great experience. We only have five children there and again involve one-to-one lessons by upper Sixth Form students.

In relation to attendance the first term was a little bit higher than the second in both schools but generally numbers remain stable. Now, we are working to increase the number of children who attend the Homework Club. We have created a leaflet to distribute to other organizations. We would like to find more children who can benefit from this lovely project.

28 children attended 27 sessions at Abbey school twice a week on Tuesdays and Thursdays and 5 children attended 22 sessions at Queen Anne`s School once a week on Mondays. The impact that this project has had the children appears significant and their responses throughout the year have been very positive. This can be seen by looking at the responses that we had from the survey that we did at the end of the club. We had responses from 15 children at Abbey school and from 4 children from Queen Anne`s school. In summary, their responses have been extremely positive with the majority of children finding the experience very good, supportive of their work and with most expressing an interest in continuing with the club.

We also asked parents their opinions and again, all felt that the service was very good and had supported their child well as some of the additional comments attest:

*The children are starting to improve at school and feel more confident.*

*He is quite confident now.*

*They are improving in their Maths and English a lot.*

*She has gained strength in answering questions.*

*He is not as shy as he was when he first started. He is more confident*

The success of this project has no doubt helped these children to improve academically and there has been some evidence of improved socialization and integration; a result of raised confidence.

We look forward to continuing to develop the Homework Clubs with the help of Abbey School, Queen Anne's School and the financial support of BG Group,

## **Integration work**

ESOL is a project that has been running for a number of years helping a number of our clients with their English. The one to one lessons have offered the clients the support they need to improve the English as well to learn about the new culture helping them to integrate in the community. During this year RRSB has supported five clients from Afghanistan, Pakistani, Somalia and Sudan.

### **ESOL Case Study**

Client: M.M

Tutor: Mariama Sheriff

Location: Reading, Berkshire (October 2014 – January 2015)

Client M.M participated in lessons very well, and seemed to enjoy the course; I believe that he would really benefit from having more lessons. We met on average once a week on the second floor of the public library in the study area. There is a lift and no issues vis-à-vis wheelchair access. However, his wheelchair is rather old and it's tough on his hands to wheel himself around so much.

He is illiterate in English, and so during the lessons we focused on saying and writing the letters of the alphabet. By the end of the one-to-one course, he was able to write most of the letters of the alphabet in capitals and lower case – he found it difficult to distinguish between letters with similar phonemes. Without further practice, he is likely to lose some of the ground he has gained.

Due to having spoken in a certain way for so long, he has a number of fossilized errors and finds it challenging to break old habits in order to use more standard English, particularly in terms of using semi-fixed question stems e.g. 'Do you have....?' and 'Can you....?'

## **Website and social media development**

Our brand new website was launched this year; it features up to date content, new functionality and will provide excellent support for spreading our message, reaching out to those who need our help and providing a place for fundraising. We are deeply grateful to the immense generosity of Brand 786 Digital Marketing in Reading who have given their time and technical expertise and donated the website to RRSB.

RRSB's social media profiles, combined with our blog, have been a valuable way of both networking with other organisations and communicating with the public. Our following has gradually grown over the past year, with a large influx of new interest in the past few weeks, following the coverage of the plight of refugees in the news. Several people have asked us, via Facebook, if there's anything they can do to help. We have a new volunteer, Merry Cross, to help respond to these enquiries, and are expecting another social media volunteer to have joined us by the time this report is published.

We are also planning a new 'Refugee Crisis Response' page on the website. This will include information about drop-off points around Reading and the surrounding area for food, clothing etc, for the refugees stranded in Calais and on their journey into Europe; a 'myth-busting' page, which I will encourage people to print out and share around; links to the most useful organisations to donate money to (British Red Cross, UNHCR, RRSF), and other advice about how people can help.

This year, we have launched a new online fundraising scheme, '1 in 1000', which aims to gather one thousand people, each giving small, regular donations. This approach to fundraising should appeal to people who want to help but have limited budgets. We will continue to push this scheme throughout the coming year.

We hope that our support base will continue to grow in 2016 – the nature of social media growth tends to be a snowball effect; the more followers you have, the more your posts are shared, and the further your influence can reach. With 178 Facebook 'likes' and 143 twitter followers (at the time of writing) we're in a strong position to move forward into the future.

I'd like to finish this section of the report with a quote, about the UK's response to the refugee crisis:

*'The British people are a kinder, nicer nation than the tabloid press would ever have you believe.'*

- Sandi Toksvig, *Newsnight*, 17<sup>th</sup> September 2015

The response I've seen so far on social media gives me hope that this is true.

**Alice Driver – website editor and social media manager**



## Income and Expenditure for the year ending 31 March 2015

	2015 £	2014 £
<b>Income Resources</b>		
Grants, Donations	70,611	55,908
Membership Fees		10
Interest	26	15
<b>Total Income</b>	<b>70,637</b>	<b>55,933</b>
 <b>Expenditure</b>		
Wages & Salaries	36,111	38,700
Administration Costs	5,623	6,444
Training	714	911
Travelling	233	63
Premises	6,731	7,338
Publicity & Publications	0	0
Events	1,156	2,472
Refugee Welfare & Expenses	2,797	1,569
Office Equipment	1,654	1,350
Membership Fees & Subscriptions	587	436
Bank Charges & Interest	(4)	24
Professional Fees	1,712	733
Sundry Expenses	88	150
<b>Total Expenditure</b>	<b>57,392</b>	<b>60,190</b>
<b>Excess of Income over Expenditure</b>	<b>13,245</b>	<b>(4,257)</b>
 <b>NET ADDITION TO RESERVES</b>		
Opening Reserves	17,967	22,224
Closing Reserves	31,212	17,967

### **RRSG funders**

Reading Borough Council

Hilden Charitable Trust

The Earley Charity

BG Group

London Legal Support Trust

### **RRSG donors**

Tony Jones: The Mayor of Reading

Ewaine Bradshaw

Adam Moss

Josephine Rado

David C Wilson

Emma Zvesper

### **Other supporters we thank:**

British Red Cross for supporting our clients with small grants.

Faith Christian Group for their generous provision of food parcels to help support destitute clients.

The staff and students of Abbey School and Queen Anne's School for their dedicated support to refugee children with their school work.

The Shed Café

Brand 786

### **Volunteers**

#### *Caseworkers:*

Behnam Balalimood

Ildephonse Rugema

George Buchanan

Mobina Mahmood

Tenisha Trotman

Marfaz Ali

#### *Admin:*

Cristina Barbara

### **Staff**

Nick Harborne

Flora Roshi

Sharon Cole

Director

Admin & Volunteer Coordinator

Bookkeeper

### **Trustees**

Mary Richardson (Chair)

Nora Honkala, Mike Martin, Andi Nygaard, Katherine Prudhoe,

Kate Smart, Bet Tickner

Paul Harper

(resigned Oct 2014)

Rachel Spencer

(resigned May 2014)

## ***Volunteers cont..***

### *Admin:*

Dhurata Hazizi

Daisy Umutesi

Faryal Saghir

Avinash Nitish Bhawon

Dan Bates

### *Fundraising:*

Tomson Chauke

Ben Gosling

Isabel Townend

### *Computer/IT/Social Media/website:*

Stephen Cook

Alice Driver

### *Integration Activities:*

Liz Bailey, Elaine Edge, Ben Gordon &

Mariama Sheriff